

User's Manual

Fixed Wireless Terminal GW1000BL

TABLE OF CONTENTS

1	PREFACE	1
2	GENERAL INTRODUCTION	2
2.1	Terminal Overview.....	2
2.2	Functions and Features.....	3
2.3	LCD.....	4
3	USING THE TERMINAL.....	4
3.1	Assembling the Terminal	4
3.2	Inserting the SIM Card.....	4
3.3	Connecting the Antenna and AC Adapter	4
3.4	Turning the Terminal on.....	5
3.5	Making a Call.....	5
3.6	Answering a Call.....	5
3.7	Switching off the Terminal.....	5
4	SETTING PARAMETERS FOR THE TERMINAL	6
4.1	Entering Setup Mode.....	6
4.2	Inputting Codes to Write Parameters	6
4.3	Exiting the Setup Mode.....	6
4.4	How to see last dialed calls	6
4.5	How to set date.....	6
4.6	How to set time	6
4.7	How to set the FCT to show billing on basis of internal Memory on the LCD.....	7
4.8	Parameter Table (for reference).....	7
5	TECHNICAL SPECIFICATIONS.....	8
5.1	Environmental	8
5.2	Electrical	8
5.3	Physical	8
5.4	Subscriber Line Interface	8
6	TROUBLE SHOOTING REFERENCE.....	9
6	MAINTENANCE	10

1 PREFACE

Please read the operating instructions and safety precautions in this manual carefully prior to installing and using this product.

Safety Precautions

Breaking the following rules may be linked to dangers or violation of law.

1. Remember not to use this terminal while driving.
2. Please switch off this terminal near petrol stations, blasting operations, medical devices or on airplanes.
3. Do not use unauthorized SIM cards for this terminal.
4. Use the terminal properly. Do not touch the antenna if not necessary.
5. Incompatible products must not be connected to this terminal. Using any other accessories invalidates the warranty.
6. Wiping with a wet cloth to clean this terminal. Do not use liquid or spray cleaner.
7. Do not open this terminal by yourself. If repair work is necessary, please contact the technical support or after-sale service team
8. Shock and vibration should be avoided while carrying or installing the product.

2 GENERAL INTRODUCTION

2.1 TERMINAL OVERVIEW

The GSM Fixed Wireless Terminal is a device for various voice communication services. The terminal operates in the GSM networks. The terminal connects a company telephone switch (PBX; Private Branch Exchange), PCO Billing Machine or any Landline Phone to a GSM network.

Installing and using the unit is easy. For making calls with a normal landline telephone, just insert the SIM card, connect the handset to the terminal, connect the power supply, and start making calls.

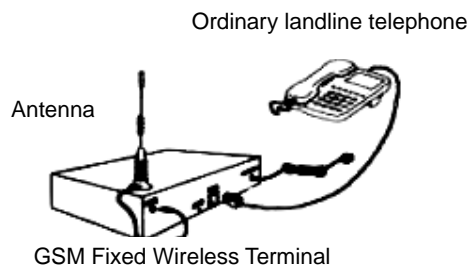


Fig. 1

Fig. 2

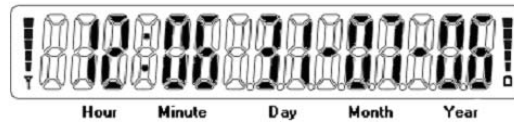


2.2 FUNCTIONS AND FEATURES

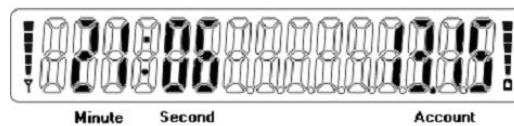
- 1 LCD: display time, date, battery capacity, signal strength, calling time and costs
- 2 Two RJ-11 ports to connect to standard telephone instrument/cordless
- 3 Polarity for Billing Machines
- 4 16 Khz metering pulse
- 5 Selective call barring outgoing(STD / ISD / STD &ISD / ALL)
- 6 SMA connector for attaching external Yagi or Patch Panel Antenna
- 7 External Omni directional Antenna with cable
- 8 Auto Area Code Prefix for local calls Dialing
- 9 Selective 95 conversion
- 10 BTS locking
- 11 SIM to FWT lock
- 12 FWT to SIM lock
- 13 FWT to network lock
- 14 (Optional) Internal 16 Khz converter with EEPROM /Flash ROM with STD code and pulse duration table
- 15 ABS body housing (both top and bottom)
- 16 Wall mountable
- 17 Billing: Set device parameters to realize billing function.

2.3 LCD

Idle Display



Display While Calling



3 USING THE TERMINAL

3.1 ASSEMBLING THE TERMINAL

In the package box, the terminal comes with an AC adapter and an antenna with magnetic mount.

3.2 INSERTING THE SIM CARD

- 1 Slide the SIM tray rightwards to unlock it and lift the unhinged end up.
- 2 Place the SIM card in the slot with the notch on the bottom left corner and the contact surface facing downwards.
- 3 Lower the SIM slot and slide leftwards to lock it.
- 4 Replace the cover.

Caution:

- ▶ Turn the terminal off before installing and removing the SIM card.
- ▶ Make sure the SIM card PIN request is not on and original PIN code is 1234

3.3 CONNECTING THE ANTENNA AND AC ADAPTER

- 1 Remove the red protective cap from the antenna connector.
- 2 Screw the cable extending from the magnetic mount to the connector.

-
- 3 Plug the adapter in the POWER socket.

3.4 TURNING THE TERMINAL ON

- 1 Connect the ordinary PSTN telephone or metering device to the TEL1 socket on the back of the terminal via a phone line.
- 2 Switch "on/off" button in the back board, LCD will be lighted, display "LOADING..." and "SEARCH...".("LOADING..." means reading SIM card, "SEARCH..." means searching for the net).
- 3 After the terminal successfully registers with a network, the LCD will show the signal strength and the terminal enters the "ready" state.

3.5 MAKING A CALL

- 1 Pick up the handset, a dial tone will be heard.
- 2 Dial the desired number. LCD will display dialing number, when the length of number exceeds 15 digits; LCD will display last 15 digits.
- 3 If the dialed number meets the specified dial length, or dialing is stopped for over 4 seconds, the dialed number will be sent out.
- 4 Add "#" after dialing, the dialed number will be sent out immediately.
- 5 When the call is put through, the corresponding ring tone will be heard.
- 6 When called person picks up the phone, LCD will display the calling time and billing on parameters of this device.
- 7 To end the call Replace the handset to end the call. (The device will enter in billing notice status or idle mode through the difference between incoming call or outgoing call. Press Handfree button or pick up the phone, and press "*", "#" button to query calling time, billing and numbers.)

Note: If the tone of "DiDiDi..." is heard during the dialing, it means the dialed number is barred.

3.6 ANSWERING A CALL

- 1 When the phone rings for an incoming call, connect phone LCD、 billing device LCD and device LCD will display the number. (Depends on the phone or metering device and also the feature being activated through network).
- 2 Pick up handset to answer the call. LCD will display calling time.
- 3 If calling length for the incoming call is preset, the terminal will terminate the call automatically when the call meets the preset limit even if the handset is not replaced.

3.7 SWITCHING OFF THE TERMINAL

Turn off the terminal via the switch or by unplugging the AC adapter.

4 SETTING PARAMETERS FOR THE TERMINAL

Firstly, to set parameters for the terminal, you need to connect a phone to the terminal for inputting digits with the keypad of phone

4.1 ENTERING SETUP MODE

When the handset of phone is connected to Fixed Wireless terminal and the LCD of Fixed Wireless Terminal are stable.

OFF-HOOK the Land Line Phone and press [*99*] + 6 digit password + [#]**

Example: *99*222222#**

Note:

- ▶ Enter a default password (222222) to login as an authorized user.
-

4.2 INPUTTING CODES TO WRITE PARAMETERS

In setup mode input 4-digit parameter code + [*] + parameter value + [#].

Example: For Programming Area code Prefix Value to 022 Dial

*****99*222222#0422*022#**

Note:

- ▶ Entered dark code is correct, LCD will display" SUCCESS".
 - ▶ Entered dark code is not correct, LCD will display" FAIL".
-

4.3 EXITING THE SETUP MODE

- (1) Replace the handset to exit the setup mode.
- (2) If in the process of configuration, power is abnormal cut, device will quit to configuration status.

4.4 HOW TO SEE LAST DIALED CALLS

Press ***99*222222#1099# and scroll up and down by using * and # button on phone

4.5 HOW TO SET DATE

Press ***99*222222#0801*DDMMYY#

4.6 HOW TO SET TIME

Press ***99*222222#0802*HHMM#

4.7 HOW TO SET THE FCT TO SHOW BILLING ON BASIS OF INTERNAL MEMORY ON THE LCD

Press ***99*22222#0515*0#0517*1#0809*1#

4.8 PARAMETER TABLE (FOR REFERENCE)

PARAMETER NUMBER	PARAMETER	LENGTH	NUMBER
0211	PASSWORD	6	1
0421	AREA CODE PREFIX (ENABLE/DISABLE)	1	1
0422	AREA CODE VALUE	16	1
0423	AREA CODE DIGIT LIST	10	1
0431 - 0449	EXCEPTION LIST	10	5
0450	REPLACEMENT LIST ENABLE	1	1
0451 - 0482	REPLACEMENT	13	32
0501	LOCAL CALL (ENABLE/DISABLE)	1	1
0502	STD CALL (ENABLE/DISABLE)	1	1
0503	ISD CALL (ENABLE/DISABLE)	1	1
0511	INCOMING CALL (ENABLE/DISABLE)	4	1
0514	LOOP INTERRUPTION	2	1
0515	PR OUTGOING CALL (ENABLE / DISABLE)	1	1
0516	PR INCOMING CALL (ENABLE/DISABLE)	1	1
0517	16 KHZ OUTGOING CALL (ENABLE/DISABLE)	1	1
0521	16Khz Pulse duration	4	1
0522	Dial time out	1	1
0600	16 KHZ DEFAULT VALUE	3	1
0601 - 0800	16 KHZ TABLE	12	200
PARAMETER NUMBER	PARAMETER(LCD)	LENGTH	NUMBER
0801	DATE	6	1
0802	TIME	4	1
0807	View Total Cost	8	1
0809	SHOW CALL CHARGES (ENABLE/DISABLE)	1	1
0900 - 1099	DIALED CALLS	~	200

5 TECHNICAL SPECIFICATIONS

5.1 ENVIRONMENTAL

Temperature	- 10 °C to + 45 °C
Relative humidity	10% to 95%
1Noise	<= 60 dB (A)
Atmosphere pressure	86 to 106 kPa

5.2 ELECTRICAL

Emission Power	<= 2 Watt
Operating Voltage	DC 12 V
Working Frequency	900/1800MHz
Receiving Sensitivity	<= -104dBm (min)
Output Power	-23.5dbW ~ -4.5dbW

5.3 PHYSICAL

Dimensions	178*124*36mm
Weight	0.275kg
User Interface	RJ11

5.4 SUBSCRIBER LINE INTERFACE

On-hook Voltage	48V
Start Charging Signal	16K and polarity reversal signal
Dial Tone Frequency	450Hz continuous
Busy Tone Frequency	450Hz 0.35s/0.35s

6 TROUBLE SHOOTING REFERENCE

Please refer to the following table for trouble-shooting.

Question		Possible cause and solution
No power indicated		<ol style="list-style-type: none"> 1. The power adapter is not connected to the device correctly. 2. The device is not switched on. 3. There is a power cut. Check them before use.
Can not connect with the network	Network indicator flashing (three times per second)	<ol style="list-style-type: none"> 1. The device may be out of the GSM network's service area. Move the device to another area. 2. The antenna isn't well connected. 3. SIM card isn't properly installed. Check them before use.
	noises and echo; frequent single pass, disconnection and system down	<ol style="list-style-type: none"> 1. The device may be placed too close to the antenna. 2. The antenna is twisted with other wires. 3. The device is near an area where there may be strongly interference, such as a broadcasting station, a mobile phone, or other transmitting equipments. 4. The antenna is placed out of the GSM network's service area. Check them before use.

	LCD	Description
2	Pin=	Enter PIN
3	No Card	No SIM card
4	Ser Lock	Network Lock
5	Pin Loc	SIM PIN locked

NOTE: If the above are in normal condition after checking but the fault still exists, please contact the franchiser.

6 Maintenance

Your device is an electronic product of high craftsmanship. Treat it with care, and it will give you years of good service. Follow the suggestions below will help you to maintain your device.

- Use the device at a temperature within 0 ~+50 .
- Store it in a clean, dust free place. Its moving parts can be damaged by dust.
- Keep it and all its accessories out of the reach of small children.
- Keep it dry and do not use harsh chemicals to clean it. To clean the device, wipe it with a soft anti-static cloth slightly dampened in a mild soap-and-water solution.
- Treat the device gently and avoid dropping, knocking or shaking it.

Fixed Wireless Terminal USER'S MANUAL V3.11

Reproduction, transfer, distribution or storage of part or all of the contents in this manual in any form without the prior written permission of technical owner is prohibited.